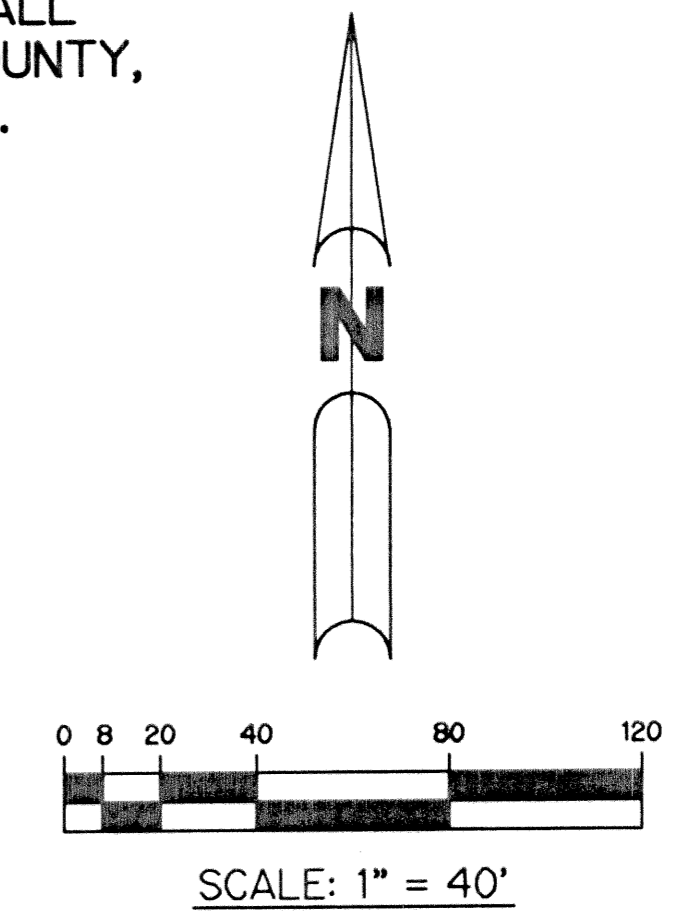
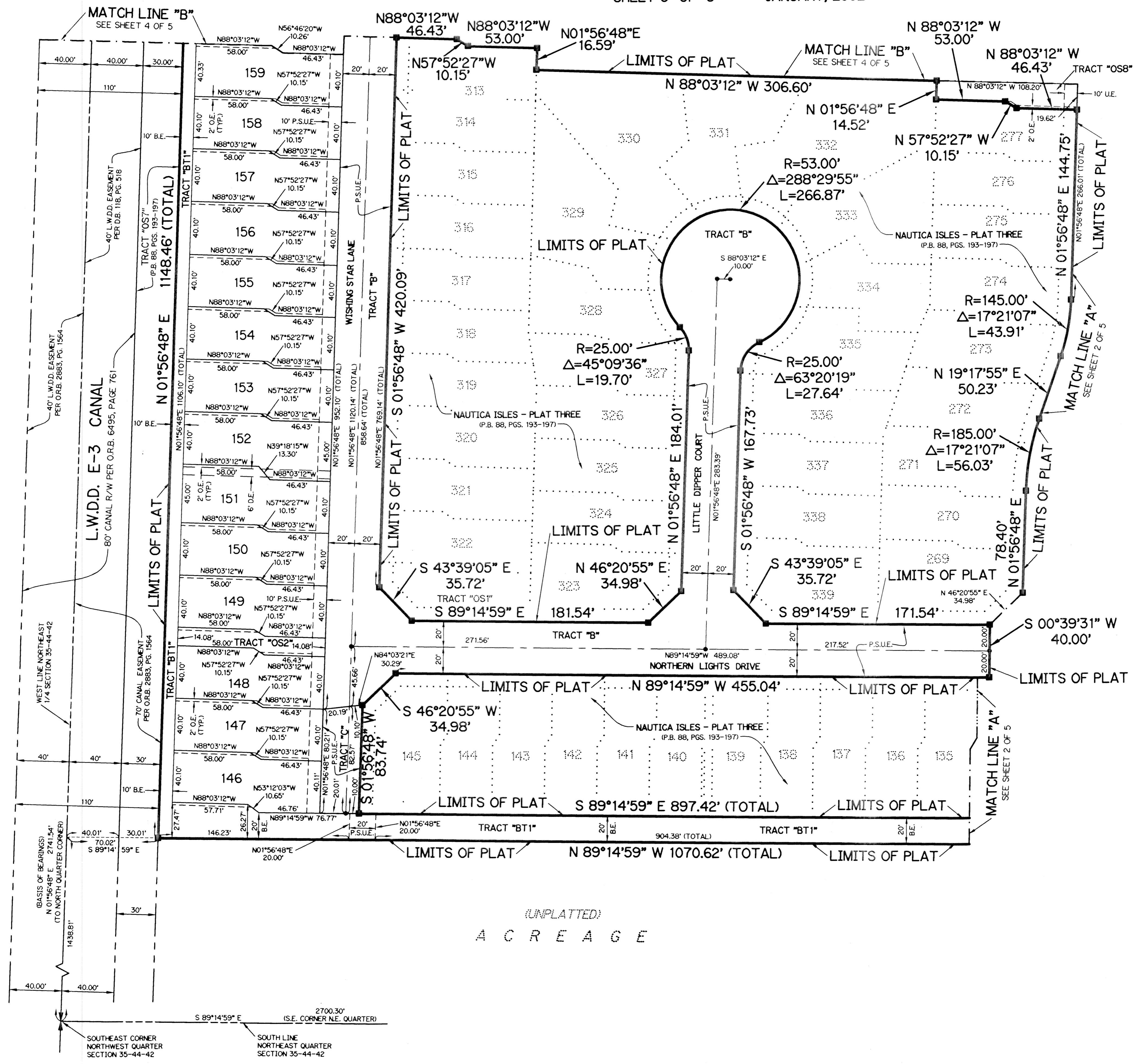


NAUTICA ISLES - PLAT THREE - REPLAT

BEING A REPLAT OF TRACTS "B", "C", "D", "BT1", "OS2" AND "OS5" TOGETHER WITH LOTS 146 THROUGH 198, 238 THROUGH 245 AND 278 THROUGH 312 ALL ACCORDING TO THE PLAT OF NAUTICA ISLES - PLAT THREE AS RECORDED IN PLAT BOOK 88, PAGES 193 THROUGH 197 PUBLIC RECORDS OF PALM BEACH COUNTY, FLORIDA, LYING IN SECTION 35, TOWNSHIP 44 SOUTH, RANGE 42 EAST, CITY OF GREENACRES, PALM BEACH COUNTY, FLORIDA.

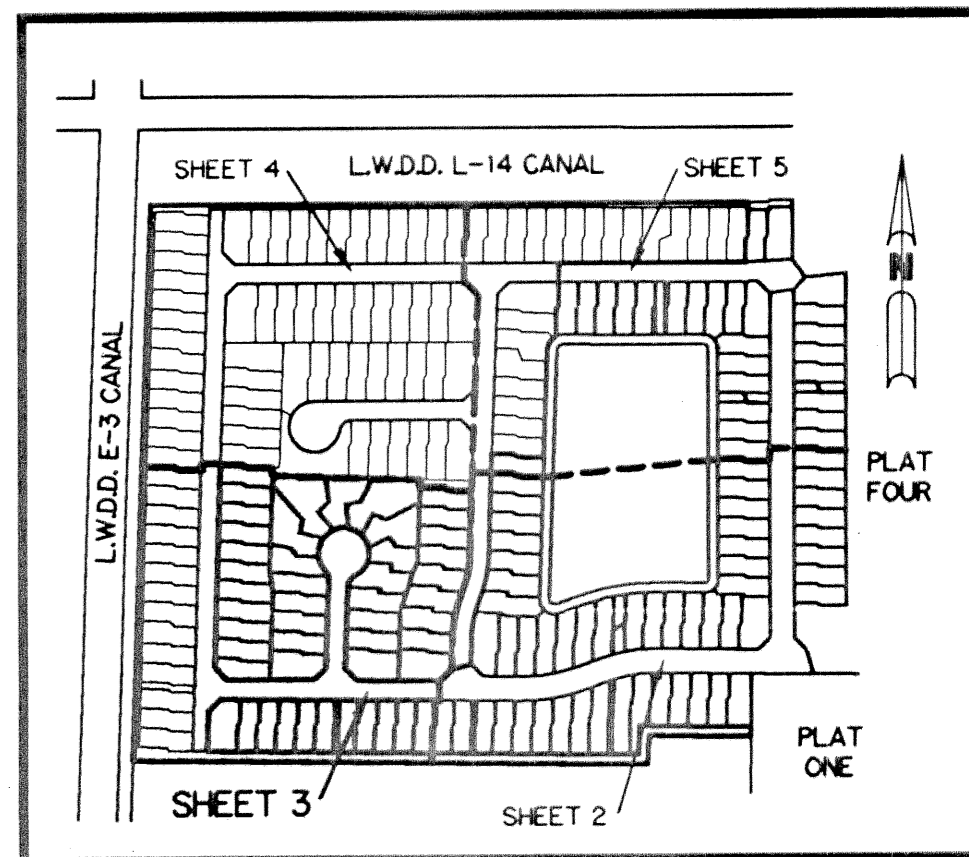
SHEET 3 OF 5 JANUARY, 2002



- LEGEND:**
- - FOUND PERMANENT REFERENCE MONUMENT, L.B. #6674
 - - SET PERMANENT REFERENCE MONUMENT, L.B. #6674
 - - FOUND PERMANENT CONTROL POINT, L.B. #6674
 - - PERMANENT CONTROL POINT
 - Δ - DELTA ANGLE
 - A.C. - ACRES
 - B.E. - BUFFER EASEMENT
 - CB - CHORD BEARING
 - CH - CHORD DISTANCE
 - C - CENTERLINE
 - D.B. - DEED BOOK
 - D.E. - DRAINAGE EASEMENT
 - L - ARC LENGTH
 - L.A.E. - LIMITED ACCESS EASEMENT
 - L.M.A.E. - LAKE MAINTENANCE ACCESS EASEMENT
 - L.M.E. - LAKE MAINTENANCE EASEMENT
 - L.W.D.D. - LAKE WORTH DRAINAGE DISTRICT
 - N.R. - NOT RADIAL
 - N.T.S. - NOT TO SCALE
 - O.E. - OVERRIANS EASEMENT
 - O.R.B. - OFFICIAL RECORD BOOK
 - P.O.B. - POINT OF BEGINNING
 - P.O.C. - POINT OF COMMENCEMENT
 - P.B. - PLAT BOOK
 - P.C. - POINT OF CURVATURE
 - P.I. - POINT OF INTERSECTION
 - PGS. - PAGES
 - P.S.M. - PROFESSIONAL SURVEYOR AND MAPPER
 - R - RADIUS
 - RAD. - RADIAL
 - R/W - RIGHT-OF-WAY
 - TYP. - TYPICAL
 - S.T. - SURVEY TIE
 - U.E. - UTILITY EASEMENT
 - P.S.U.E. - PRIVATE SPECIFIC UTILITY EASEMENT

THIS INSTRUMENT PREPARED BY
 PERRY C. WHITE, P.S.M. 4213, STATE OF FLORIDA
 LAWSON, NOBLE AND WEBB, INC.
 ENGINEERS PLANNERS SURVEYORS
 420 COLUMBIA DRIVE
 WEST PALM BEACH, FLORIDA 33409
 LB-6674

KEY MAP



(UNPLATTED)
A C R E A G E